

AQUA OHIO

At A Glance



500k PEOPLE SERVED



180 EMPLOYEES



3 WASTEWATER SYSTEMS



19 COUNTIES



2200+ MILES OF MAIN



95 WELLS



40 MILLION GALLONS DAILY

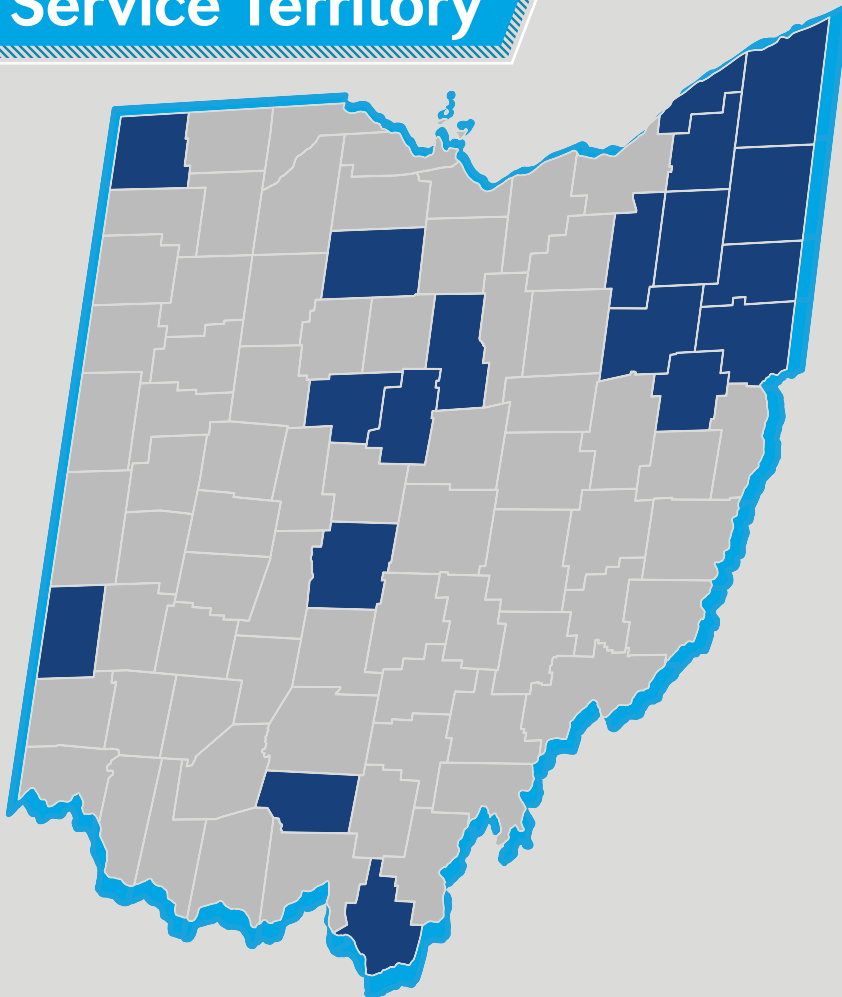


35 WATER SYSTEMS



33 TREATMENT PLANTS

Ohio Service Territory



Service Area

Aqua Ohio provides services in the following counties:

Franklin	Geauga	Morrow	Mahoning
Lawrence	Summit	Portage	Trumbull
Preble	Williams	Pike	Carroll
Ashtabula	Marion	Seneca	Columbiana
Lake	Richland	Stark	

Aqua Ohio President

Edmund Kolodziej

- #1 largest private water and waste water utility in Ohio
- #2 largest subsidiary of Aqua America

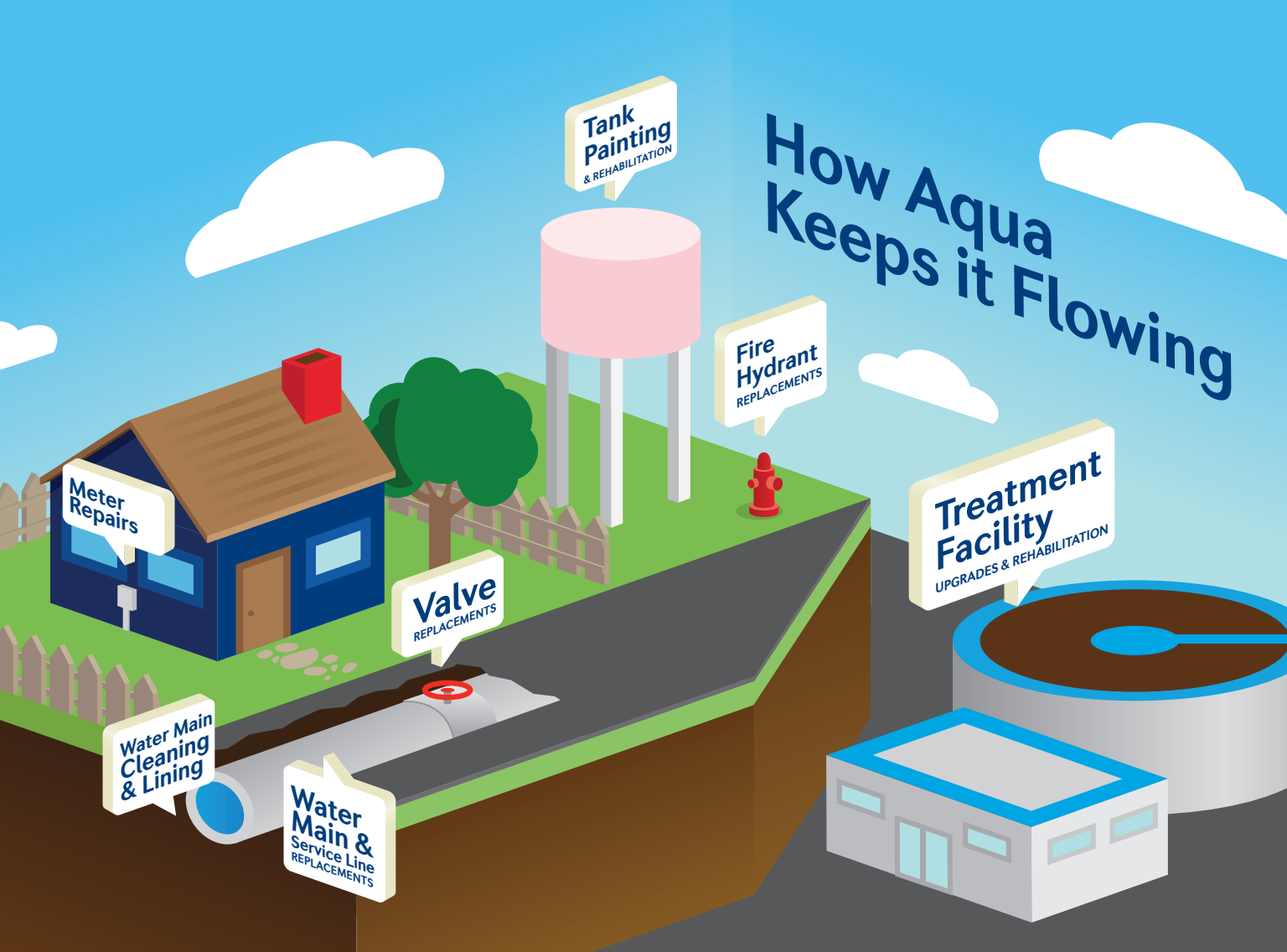
Aqua Ohio History

- Aqua Ohio's history dates back to 1853 when the Massillon Water Supply Company was formed. The name Ohio Water Service Company was adopted in 1928.
- Between 1926 and 1970, Ohio Water Service Company acquired several other water companies in the state before merging with Consumers Water Company of Portland, Maine in 1973.

- Ohio Water Service became known as Consumers
- Ohio Water Company (COWC) in 1993.

- In March 1999, Consumers Water Company merged with Philadelphia Suburban Corporation (PSC). PSC was renamed Aqua America, Inc., in 2004 and COWC became Aqua Ohio, Inc.

- On May 2, 2012, Aqua America, Inc. completed the purchase of all of American Water Works Company, Inc.'s regulated operations in Ohio, yielding Aqua America eight additional water systems and three wastewater system in Ohio.



How Aqua Keeps it Flowing

Corporate Overview



8
TOTAL STATES SERVED

3
MILLION PEOPLE SERVED

1,700
EMPLOYEES

WTR
STOCK SYMBOL

Christopher Franklin
PRESIDENT & CEO

History 130+ Years

Headquartered in Bryn Mawr, PA

Founded in 1886 by engineering professors at Swarthmore College, who — concerned about the local well water supply and nearby Typhoid Fever outbreaks — abandoned their wells in favor of nearby spring water.

AREAS OF EXPERTISE

- Reliable delivery of quality water that meets or outperforms state and federal regulations
- Large and small water and wastewater systems

- Rural, urban and suburban
- Quality wastewater services consistent with applicable standards for public health and environmental quality standards